

# i-charge<sup>®</sup> 9

Battery charger

## User manual

Article No. K.1.S.72.0344.3  
Manual No: 78.1042.2099.01  
Revision date: 31/03/2024



### i-team Professional b.v.

Hoppenkuil 27b, 5626 DD Eindhoven, The Netherlands

Telephone: +31402662400

Email: [hello@i-teamglobal.com](mailto:hello@i-teamglobal.com)

Internet: [www.i-teamglobal.com](http://www.i-teamglobal.com)





Original user manual, written in the English Language

Future Cleaning Technologies B.V.

Hoppenkuil 27b, 5626 DD Eindhoven, The Netherlands

Telephone: +31402662400

Email: [hello@i-teamglobal.com](mailto:hello@i-teamglobal.com)

Internet: [www.i-teamglobal.com](http://www.i-teamglobal.com)

Model: i-charge 9

Date:08/04/2023

Product code: S.72.0344

Version: v.2.0



## Preface

Thank you for purchasing the i-charge® 9. The i-charge 9 is made to charge i-power batteries in a short amount of time. The quick exchange i-power battery system makes our battery powered machines a real cleaning workforce. With 2 sets of i-power batteries you can clean 24/7. Waiting for your i-power batteries to charge is a thing of the past. You can charge your batteries up to 4 times quicker with the i-charge 9! With the i-stack®, the i-charge 9 can be stacked to upload multiple batteries at the same time.

The i-charge 9 is easy to use when you follow the instructions. Please read the user manual carefully. Become familiar with the correct operation and maintenance procedures. Store the manual in a safe place. The manual is an essential part of the i-charge 9 and must be handed over to the new owner upon resale or exchange. Each i-charge 9 has a unique serial number that can be found on the bottom of the body. Your i-team partner may need this number.

When this manual refers to “the manufacturer” this means: Future Cleaning Technologies B.V., an affiliate company of i-team in Eindhoven, the Netherlands. When this manual mentions “the partner” your local i-team resell and support service partner is referred to.

## Purpose of the user manual

The purpose of the user manual is to provide the user with information during the life of the i-charge 9 in such a way that the i-charge 9 is used correctly, efficiently and safely, even in the event of reasonably foreseeable misuse.

The user manual contains instructions regarding:

- personal operator safety;
- intended and non-intended use of the i-charge 9;
- instructions for daily use;
- maintenance instructions;
- storage conditions;
- disposal of the i-charge 9.

These instructions must be considered to avoid risks that could lead to physical and/or material damage.

## Target audience

This user manual is intended for operators of the i-charge 9 and their supervisors, as well as partners and importers.

## Operators of the i-charge 9





The i-charge 9 may only be operated by a person who:

- has correctly read and understood the instructions in this manual;
- is trained by an experienced operator who has read and understood the instructions in this manual.



## Reading guide

The following symbols and terms are used throughout this manual to alert the reader to safety issues and important information:

Symbol	Term	Explanation
	<b>WARNING</b>	Indicates a hazardous situation which, if the safety instructions are not followed, can lead to injuries of the operator or bystanders, light and/or moderate damage to the product or the environment.
	<b>CAUTION</b>	Indicates a hazardous situation which, if the safety instructions are not followed, can lead to light and / or moderate damage to the product or the environment.
	<b>ATTENTION</b>	Indicates a liability situation, where the manufacturer or its partners and affiliates cannot be held accountable for damages caused by non-compliance.
	<b>BATTERIES</b>	Indicates a battery-operated machine, batteries must be charged according to the instructions in this user manual. Batteries must be disposed of according to your local laws and regulations.



# Content

Preface.....	3
Purpose of the user manual .....	3
Target audience .....	3
Operators of the i-charge 9.....	3
Reading guide .....	4
1 Introduction .....	7
1.1 Intended use of the product .....	7
1.2 Non-intended use of the product.....	7
1.3 Modifications .....	7
1.4 Specifications .....	8
1.5 Warranty .....	9
1.6 Identification .....	9
2 Description.....	10
2.1 Battery charge displays .....	11
3 Safety.....	12
3.1 General Safety Instructions .....	12
3.1.1 Batteries .....	12
3.2 Risks during operation.....	13
4 Transport and storage.....	14
5 Assembly and installation .....	15
5.1 Unboxing .....	15
5.2 Assembly .....	16
6 Operation.....	17
6.1 Before you start .....	17
6.2 Operation .....	17
6.2.1 After operation .....	18
6.3 Cleaning and storage.....	18
6.3.1 Cleaning .....	18
6.3.2 Storage.....	18
7 Maintenance.....	19
8 Trouble shooting.....	20
9 Decommissioning and disposal .....	21
10 Attachments .....	22



10.1 CE Certificate.....22



# 1 Introduction

The i-charge® 9 is easy and safe to use. You will be surprised how fast and effective the i-charge 9 is. This manual helps you get started and explains the operation and maintenance procedure.

This manual is intended for those who work with the i-charge 9 and perform daily maintenance. The manual must be read in full before the first actions. This manual describes the correct method of use, safety measures, maintenance and transport.

i-team continuously improves all their products based on user experience and feedback. Any deviations between the texts and/or images from the manual and your i-charge 9 can therefore arise from the difference in model or from possible changes due to continuous development and innovation.

## 1.1 Intended use of the product

The i-charge 9 should be used indoors in a dry and well ventilated open environment.

**ONLY** use original Lithium - Ion batteries provided and certified by the manufacturer.

## 1.2 Non-intended use of the product



### **WARNING**

Non-intended use can have consequences for the safety of operators and bystanders and will void the warranty on the product.

The i-charge 9 is not intended for use outdoors or in a wet or closed environment.

Do not charge non original batteries or non-rechargeable batteries with the i-charge 9. Alternative products will void the manufacturer's warranty, more importantly they may also cause serious harm to the operator. Non-original batteries, for instance, can burst open.

## 1.3 Modifications

It is not permitted to make modifications to the design of the i-charge 9 without consultation and permission from the manufacturer. This affects the warranty, see section 1.5.



## 1.4 Specifications

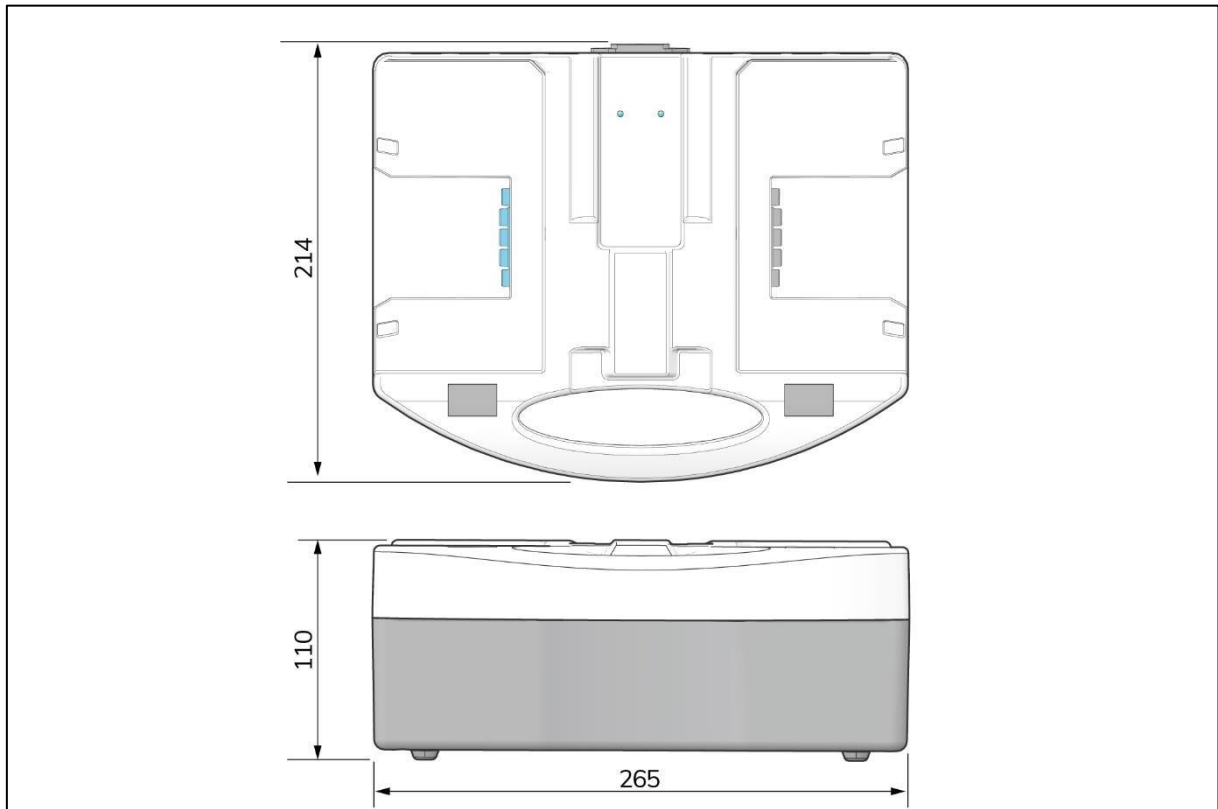


Figure 1

Product size:	265 x 214 x 110 mm
Weight:	1.7 kg
Battery capacity:	2 batteries/63 Hz
Power supply:	100-240 V, 50/60 Hz per side
Output voltage:	DC 29.4 V per side
Charge current:	9 A per side
Standby power:	2 W
Average charging time:	i-power 9: 1 hour, i-power 14: 2 hours
Operation temperature and humidity:	5 C - 40 C: 20% - 90% RH, no condensing
Storage temperature and humidity:	10 C - 85 C: 10% - 95% RH, no condensing





## 1.5 Warranty

The i-charge® 9 should only be operated with the materials supplied. Using alternative supplies may cause damage to the i-charge 9 and may cause a risk to the operator. The use of alternative supplies voids manufacturer's warranty.

## 1.6 Identification

Each i-charge 9 has a unique serial number that can be found on the bottom of the body. Your i-team partner may need this number.

Explanation type plate:

**i-team**

Item No./項目番号: S.72.0344  
Description: BATTERY CHARGER  
品名: iシリーズ用バッテリー充電器  
Input / 入力: AC 100-240V, 7A MAX, 50-60Hz  
Output / 出力: DC 29.4V, 9Ax2 (Each output 9A)  
Fuse / ヒューズ 16.3A

株式会社くわかん  
Serial No. / シリアル番号 :  
**Made in China** 中国製  
充電器をご使用になる前に取扱説明書をよくお読みください。  
Before charging, read the instructions.  
avant le chargement, lisez les instructions.  
CAUTION: FOR INDOOR ONLY  
attention: pour une utilisation à l'intérieur

東莞市偉博電池科学技術有限公司  
Dongguan Victory Battery Technology Co., LTD

iシリーズ用リチウムイオン電池のみを充電してください。他のタイプのバッテリーは、けがや事故を引き起こす可能性があります。  
**WARNING: USE ONLY RECHARGEABLE BATTERIES OTHER TYPES MAY EXPLODE**  
avertissement: à utiliser seulement rechargeable piles autres types peut exploser  
バックフイード保護 **Backfeed Protection**  
警告: 火災や感電の恐れがあります。出力端子同士を接続させないでください。充電可能なバッテリーは取扱説明書を参照してください。  
注意: 感電の恐れがあります。乾いた水気のない場所で使用してください。液体や蒸気、雨などには触れさせないでください。  
**WARNING: Risk of Fire or Electric Shock.**  
Do not interconnect output terminations.  
Refer to the instruction manual for the size, type, and number of batteries to be charged.  
**CAUTION: Risk of Electric Shock.**  
Dry location use only. Do not expose to liquid, vapor, or rain.

Item number: S.72.0344.XXX  
Description: Battery charger

Serial number:

Figure 2



## 2 Description

The compact i-charge® 9 is designed to charge 2 batteries in parallel.

The i-charge 9 consists of:

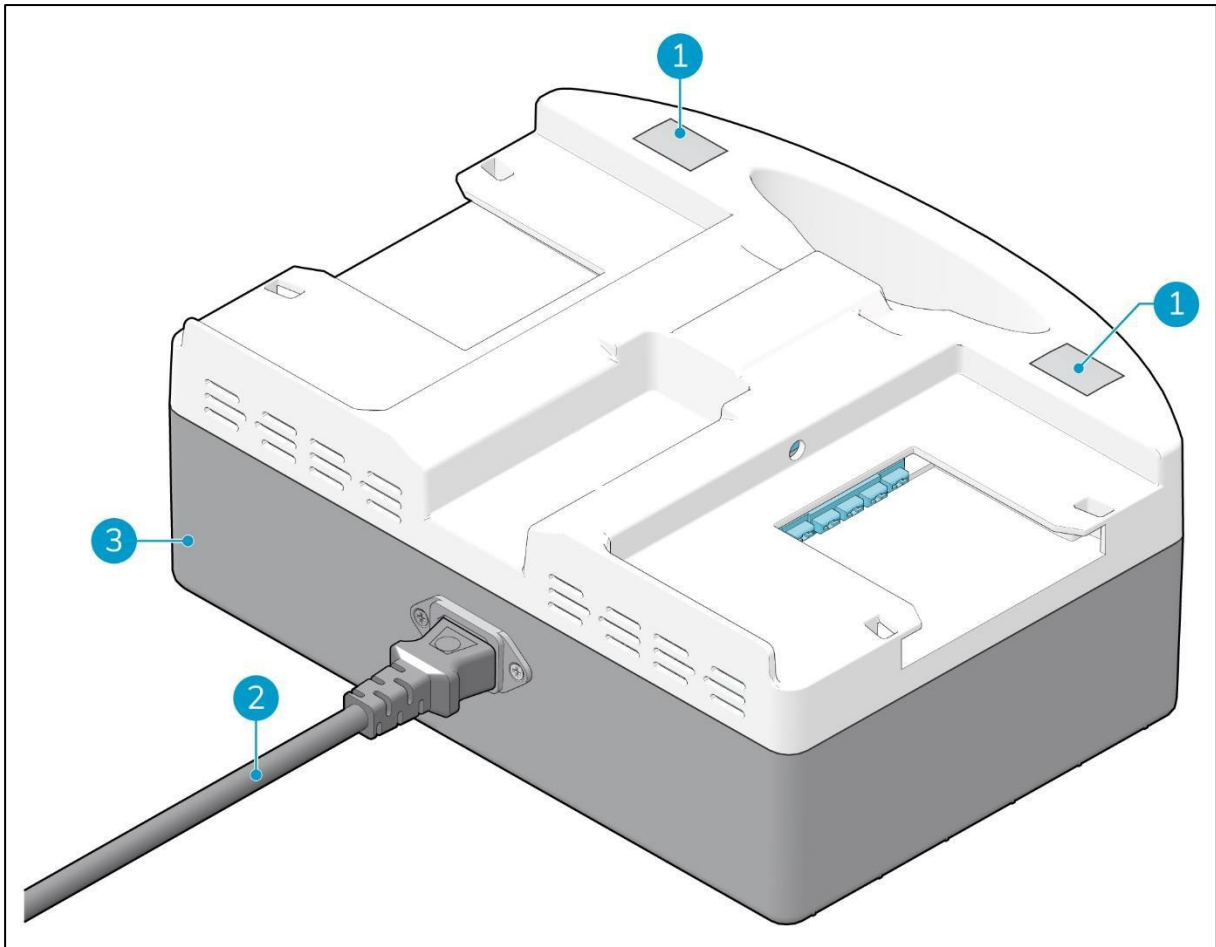


Figure 3

### Legend

1. The battery charge displays.
2. The power cable.
3. The main body.



## 2.1 Battery charge displays

1. Battery charge displays. When the batteries are charged, the amount of bars will go up from one bar that blinks, which indicates that the batteries are almost empty. To three bars that burn continuously, which indicates that the batteries are full and ready to use.

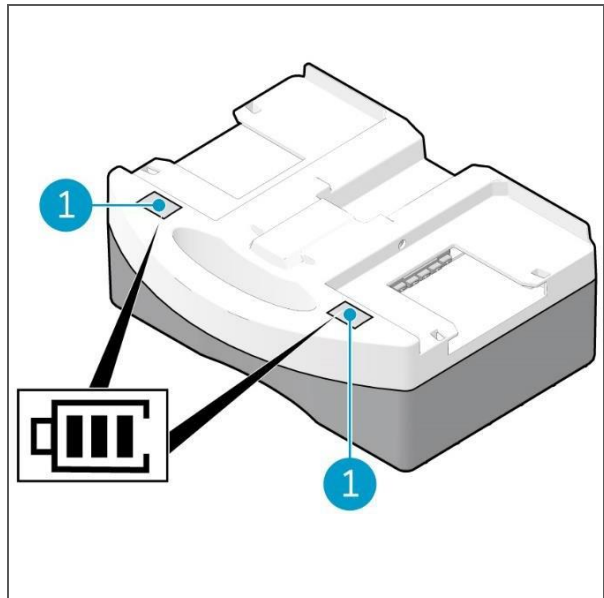


Figure 4



## 3 Safety

Safety comes first, therefore please take time to read and understand these safety instructions. Improper use can cause harm or void the manufacturer's warranty.

### 3.1 General Safety Instructions



#### **WARNING**

**DO NOT** operate the i-charge® 9 with wet or moist hands.

#### 3.1.1 Batteries



#### **CAUTION**

During normal operation the 24 V batteries cause no safety hazard on their own. Please keep in mind the following safety instructions:

- do not crush, pierce or damage in any way;
- do not heat or incinerate;
- do not short-circuit;
- do not dismantle;
- keep the batteries dry;
- only charge between 5 °C ~ 40 °C/41 °F ~ 104 °F;
- only use between 5 °C ~ 45 °C/41 °F ~ 113 °F.



## 3.2 Risks during operation

### CAUTION

Do not operate the i-charge® 9:



- unless you have read and understood this manual;
- under temperatures of 0 C/32 F;
- near flammable dusts, liquids or vapors;
- near flammable liquids like gasoline or oil, acids or volatile substances;
- outdoors or in an explosive environment;
- if it is dirty or wet;
- over electrical floor outlets, to avoid electric shocks;
- if any parts have been damaged or removed.

### WARNING

If exposure to any battery chemicals happens, act as follows:



#### Contact to the eyes:

- flush the eyes with plenty of water for a minimum of 15 minutes, lift the upper- and lower eyelid occasionally;
- seek medical attention.

#### Inhalation:

- vacate from the exposure environment and move to an environment with fresh air immediately;
- seek medical attention.

#### Ingestion:

- give at least two glasses of milk or water. Induce vomiting unless the person is unconscious;
- seek medical attention.

- do not block the cooling fan inlet;
- do not remove the warning decals;
- do not use the power cable to unplug- or to carry the i-charge 9;
- do not charge wet or damaged batteries;
- do not cover the i-charge 9 during usage;
- ensure that the main voltage is identical to that mentioned on the identification plate on the i-charge 9;
- only use the i-charge 9 in an environment that is well ventilated and has a good heat dissipation.



## 4 Transport and storage



### **CAUTION**

The storage environment should not contain corrosive gasses. There should be no magnetic fields. Vibrations should be avoided.



## 5 Assembly and installation

### 5.1 Unboxing

The i-charge® 9 is packed in 1 box.

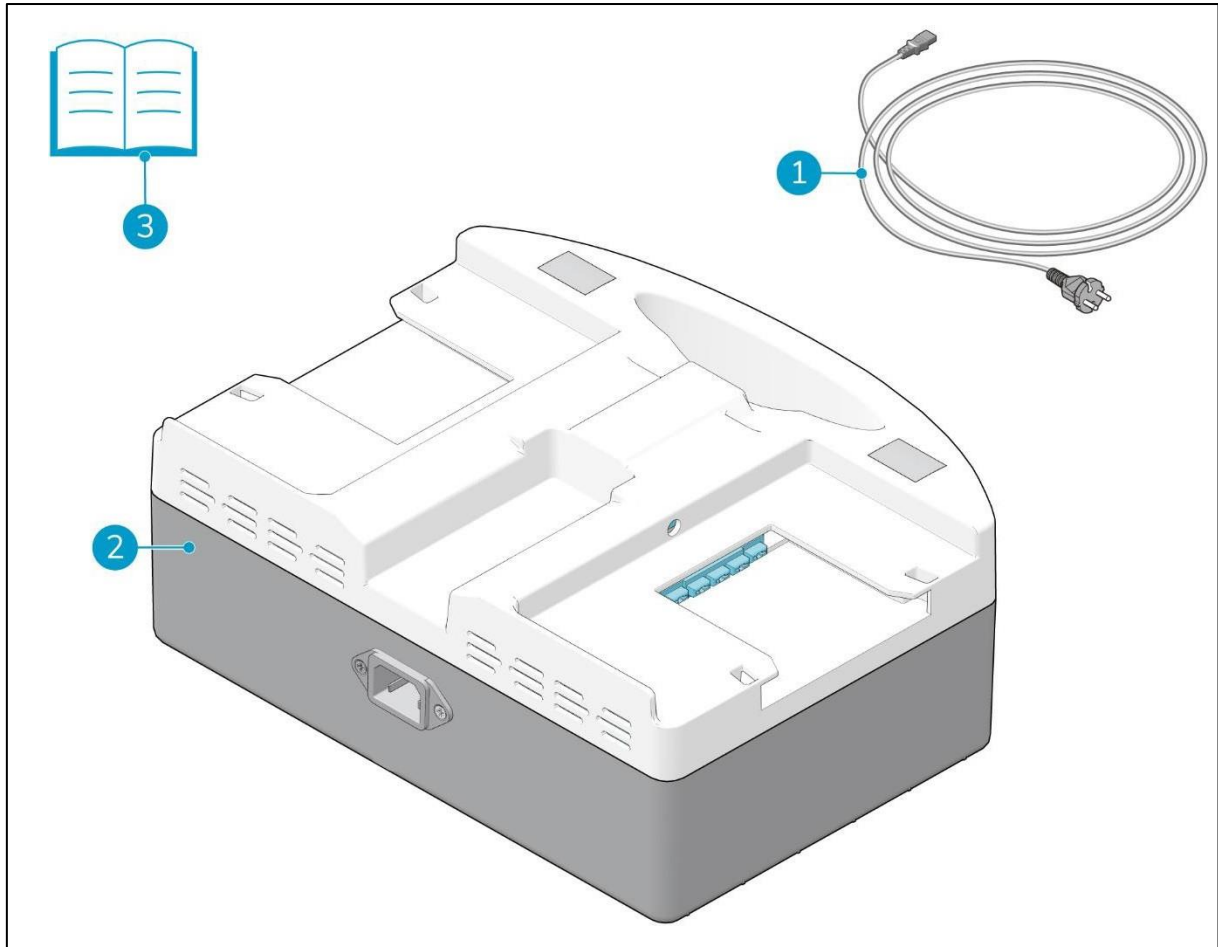


Figure 5

#### Legend

1. 1x power cable
2. 1x i-charge 9 battery charger
3. 1x this user manual



## 5.2 Assembly

Connect the power cable (Figure 6, pos 1) to the connector at the backside of the i-charge 9.

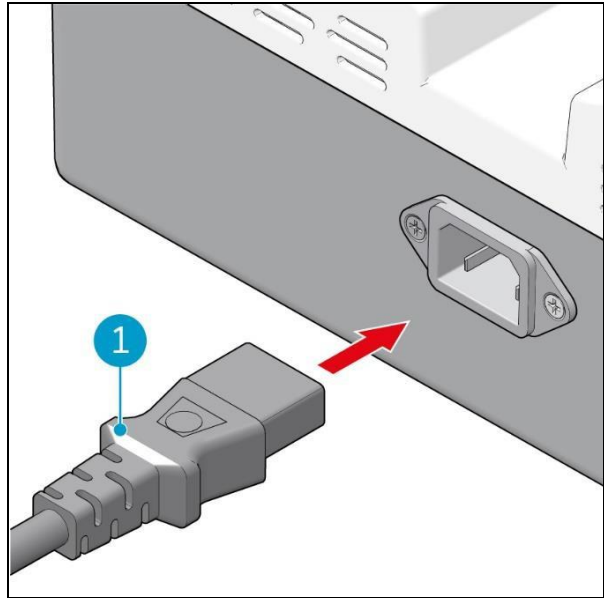


Figure 6





## 6 Operation

### 6.1 Before you start

- check the i-charge® 9 for damage;
- check the battery for damage.

### 6.2 Operation

1. Plug the main power cable into the wall socket (Figure 7, pos 1).
2. Align each battery with the charging dock (Figure 7, pos 2) and insert each battery, until you hear a "click". The batteries are now fixated and ready for charging.

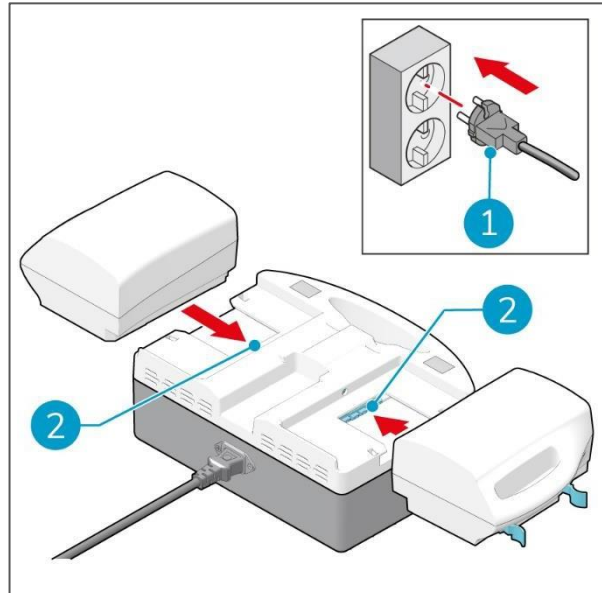


Figure 7

3. The two displays (Figure 8, pos 1) indicate the charge level of the batteries.
4. When the batteries are fully charged the displays indicate three bars. See also section 2.1.

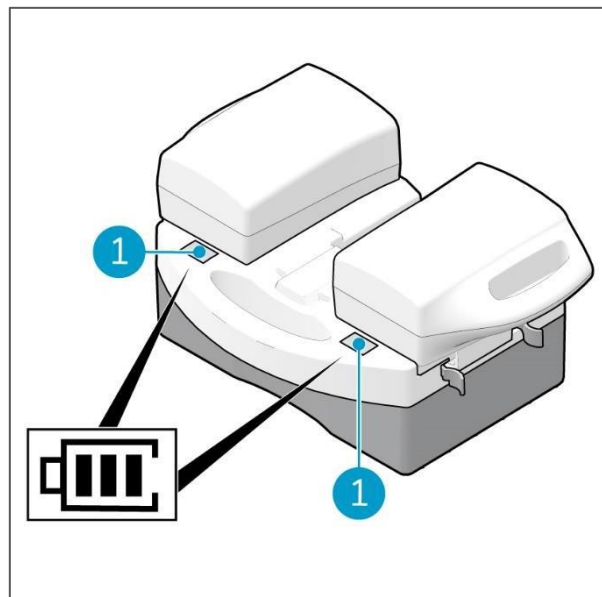


Figure 8

5. Press the plastic clips of the battery (Figure 9, pos 1) slightly towards each other.
6. Pull out the batteries.

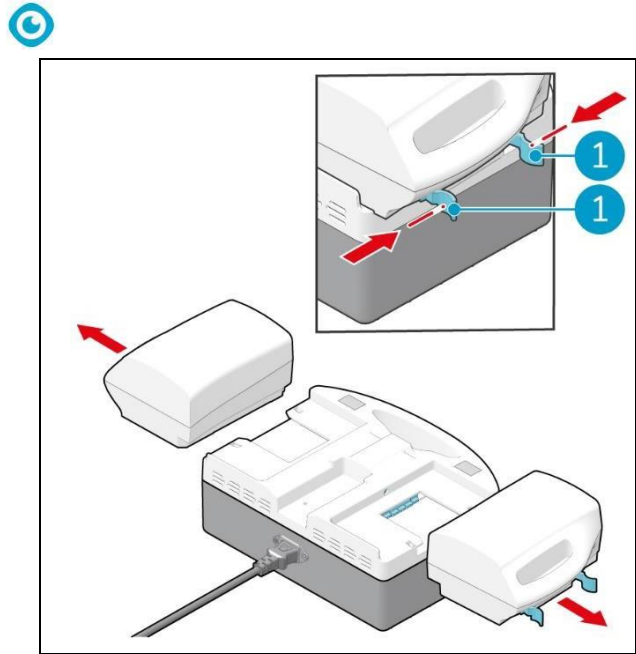


Figure 9

### 6.2.1 After operation

Wait 10 seconds after charging before you insert a new battery for loading. This will allow the memory of the i-charge® 9 to reset.

## 6.3 Cleaning and storage

### 6.3.1 Cleaning

It is recommended to clean the i-charge 9 with a damp cloth every once in a while.

### 6.3.2 Storage

- store the i-charge 9 in a dry environment;
- batteries can be stored separated from the charger or left on the charger. When left on the charger the batteries will not drain;
- for long term storage, fully charge the batteries and remove them from the charger.



## 7 Maintenance

Maintenance and repairs should only be done by manufacturer authorized personnel.



## 8 Trouble shooting

<b>Problem</b>	<b>Cause</b>	<b>Solution</b>
<b>No power</b>	Power cable not correctly inserted	Check if power cable is inserted correctly.
<b>No display</b>	N/A	Bring the i-charge® 9 to your i-team partner.
<b>Battery not working after full recharge</b>	Potentially faulty battery	Try with other battery first, if that one works, call your i-team partner.



## 9 Decommissioning and disposal



### ATTENTION

It is the responsibility of the i-charge® 9 owner to dispose of the product.

At the end-of-life the i-charge 9 still contains volatile materials and must be disposed of according to your local laws and regulations regarding recycling of electrical equipment.


Batteries also must be disposed of according to your local laws and regulations regarding recycling of electrical equipment. See also the User Manual of the i-power 9® and the i-power 14®.





# 10 Attachments

## 10.1 CE Certificate



**EG/EC**  
 KONFORMITÄTSERKLÄRUNG  
 DECLARATION OF CONFORMITY

Wir  
 We **Future Cleaning Technologies B.V., Hoppenkuil 27b, 5626 DD Eindhoven**

---

Erklären in alleiniger Verantwortung, dass das Produkt	Scheuersaugmaschine
Declare under our sole responsibility that the product	Scrubber-dryer

**I-Mop Battery Charger**  
 (Art der Maschine / Type of machine)

---

**S.72 .0344.0**  
 und folgende / and following  
 (Modell - Seriennummer; Baujahr / model - serial number; year of production)

---

auf das sich diese Erklärung bezieht, mit den folgenden Normen übereinstimmt,  
 to which this declaration relates is in conformity with the following standards,

CB report issue base on  
 IEC 60335-2-29:2002 +A1 +A2  
 IEC 60355-1 ; 2010 +A1

2014/30/EU Electromagnetic Compatibility  
 2014/35/EU Low Voltage Directive  
 EMC  
 EN55022:2010+AC:2011  
 EN55032:2012  
 EN55024:2010  
 EN61000-3-2:2014  
 EN61000-3-3:2013  
 LVD  
 EN60335-1:2012/A11:2014  
 EN60335-2-29:2004/A2:2010  
 EN62233:2008

(Titel und/oder Nummer sowie Ausgabedatum der Norm(en) oder der anderen normativen Dokument(e)  
 (Title and/or number and data of issue of the standard(s) or other normative document(s))


gemäss den Bestimmungen der Richtlinien:  
follow the provi~~s~~ion of directives:

Eindhoven, 01.06.2017

(Ort und Datum der Ausstellung)

(Place and Date of issue)

Frank van de Ven  
 Director  
 (Name und  
 Unterschrift oder gleichwertige Kennzeichnung des  
 Befugten)  
 name and signature or equivalent marking or  
 authorized person)





This document is part of the technical file of the i-charge<sup>®</sup> 9 and will be available upon request.